

This is a quickstart guide for programming the CTG-KNX/IP or CTG-EIB/NX available at www.comm-tec.de.

Both devices have the same protocol, but different interfaces.

Notes:

- The CTG-KNX/IP allows only one simultaneous IP connection, this means having the controller and a software simultaneous connected does not work.
- The gateway has a build in filter table. Only group addresses which are listed in this filter can pass the gateway, everything else will be deleted!!(see page 2 of this document)
- The filtertable can't be retrieved from the gateway.

Communication parameters:

CTG-EIB/NX	CTG-KNX/IP
Baudrate: 38400 8N1	Port: 10002
Use a straight cable (pin 2, 3 & 5)	

Frameformat: <STX> <command> <ETX>

<STX> = 02 hex (0x02)

<ETX> = 03 hex (0x03)

<command> = ASCII commands

Commands:

uppercase W is for Writing

uppercase R is for Reading

Samples:

0x02W10/5/7=10x03

Writes the value 1 to the group address 10/5/7

0x02W1/65/77=1000x03

Writes the value 100 to the group address 10/65/77

0x02R10/5/70x03

Request the value of the group address 10/5/7

Feedback:

Cyclic data, confirmation of a send command(only Echo, if it is turned on)

A>10/5/7=1

When doing readrequests:

A@10/5/70=192

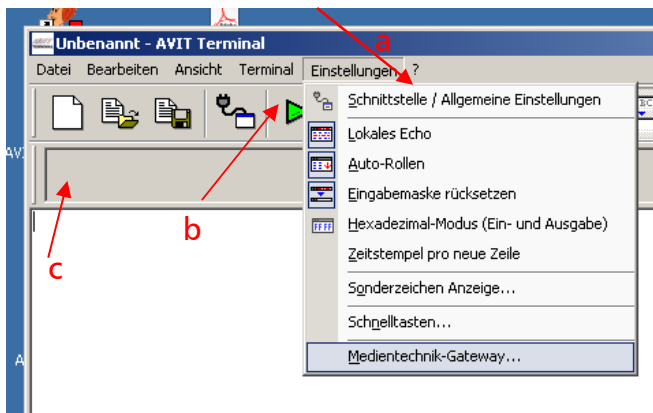
When EIB-Bus is busy:

Try to read 3 times

B@01/0/203 You can make a message bus is busy, but it is useless.

-@01/0/203 no answer massive EIB Problems, call the EIB technician

Setting the Filtertable and communication with the gateway



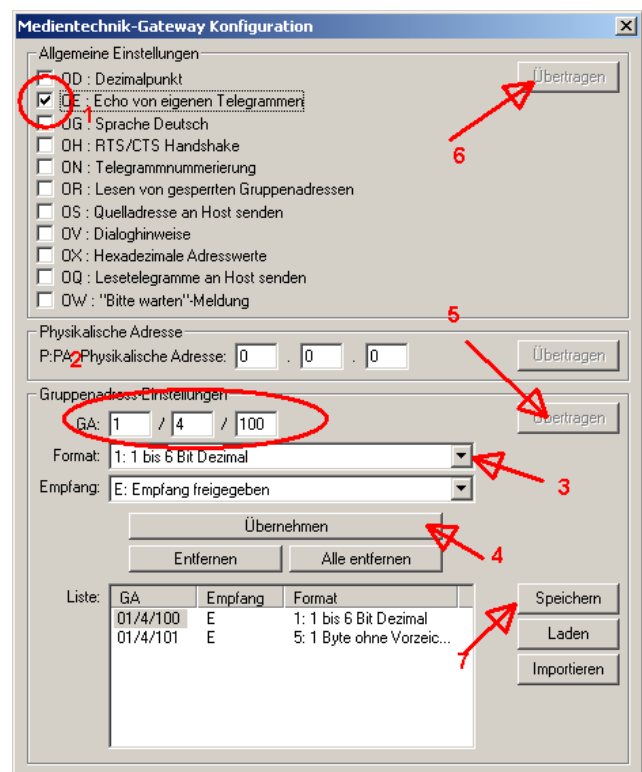
- First set the Interface parameter
- Press the Green arrow for connecting to the Gateway
- type a ? and <Return> in the text field here. If you are connected you get a list of commands from the gateway, which shows everything is working properly.
- You can test the commands from the first page for reading and writing here

Setting the Filtertable

- Set the option for Echo (1)
- Press the transmitt button (6)
- Enter the group adress you want to read or programm in the fiels (2)
- Choose the correct Datatype of the variable(3)
- Press the button (4) for accepting your selection
- Repeat the last 3 steps until all your needed addresses are entered
- If you have entered all needed addresses send them to the gateway by pressing button (5)
- For later use save the content of the filtertable in a textsheet (7). This is optional not needed

NOTE:

If your Media control system is reconfiguring the filtertable by itself. You do not need to manually set the filtertable.



Sample

What you need from a EIB/KNX programmer to set up your Gateway:

Address	Type	Description	Parameters	Read or write
1 / 4 / 100	1 Bit	Lamp 1	0 – off 1- on	write
1 / 1 / 103	4 Bit	Lamp 1	Dimmer	write
1 / 4 / 102	1 Byte	Lamp 1 get value absolut	0-255	read
1 / 4 / 101	1 Byte	Lamp 1 set value absolut	0 - 255	write